

Sustainable Agricultural Intensification and Integrated Natural Resource Management in Sudan Savanna of West Africa

SS-Taskforce-
KKM-PLS

Constraints in West African Dry savannas

- **Biotic and abiotic constraints**
- **Market problems**
- **Unfavorable policy environment**
- **Low capacity and weak institutions**



Major production constraints

- **Poor soil fertility**
- **Striga infestation of cereal and legume fields**
- **Drought**
- **Crop pests and diseases**
- **Poor access to inputs (seeds, agro-chemicals)**
- **Poor access to information**
- **Post-harvest losses**



Striga infestation of crop fields



Nitrogen deficiency effects on crops



Objective of SS-Taskforce

- **Improve Agricultural productivity and increase income in the Sudan savannas of West Africa**



Approach

- **Interventions that interface between productivity enhancement, sustainable natural resource management, markets and policies**
- **Working from a value chain perspective**
- **Working through innovation platforms**



Outputs

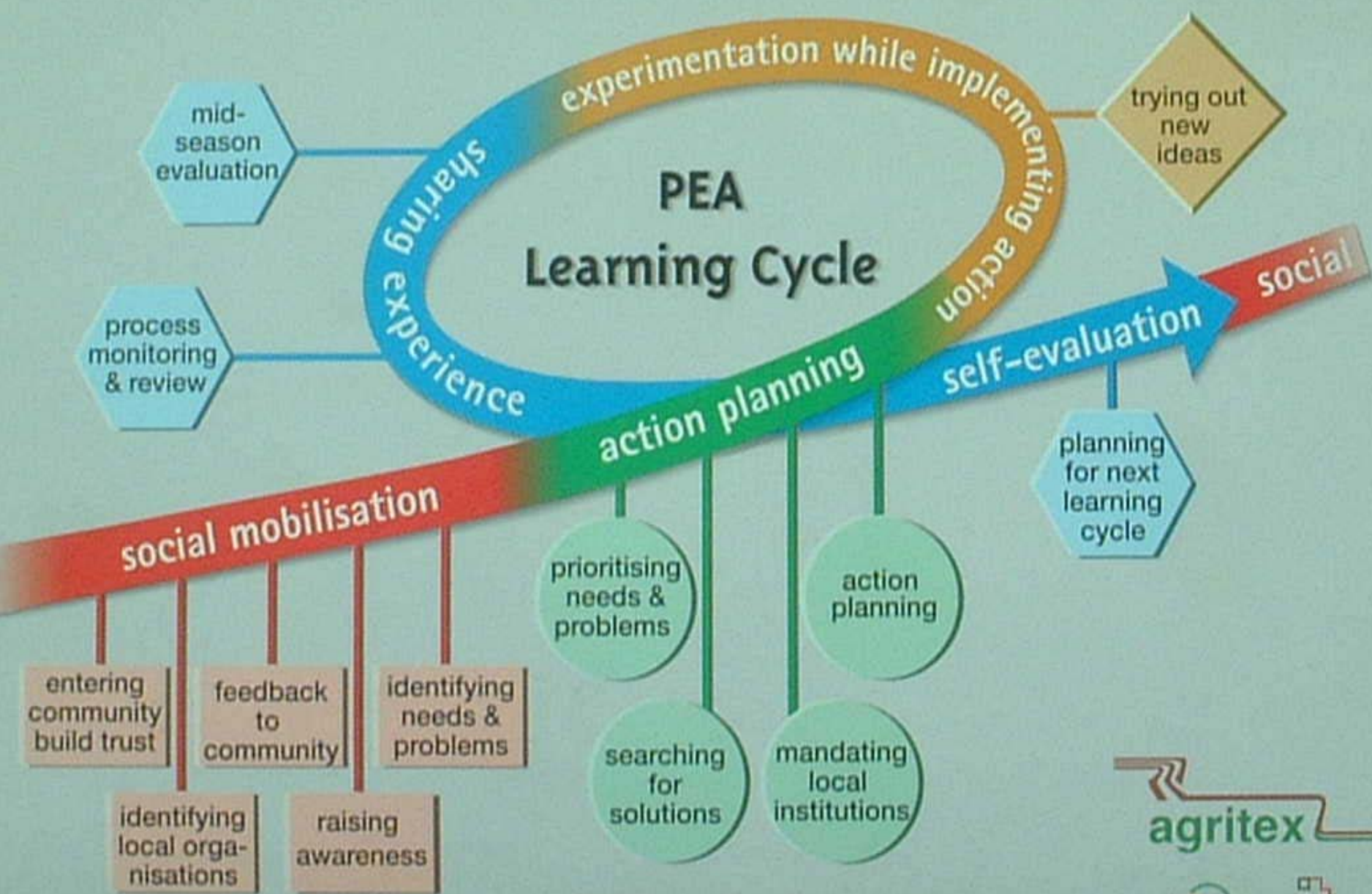
- An innovation platform for collective interaction and capacity building operationalized and the benefit of its use established.
- Market-driven, integrated production practices and sustainable natural resource management collectively validated, adapted, and scaled-out by all stake-holders
- Linkages between policy and agricultural productivity understood, and enabling policy options for sustainable productivity promoted
- Innovative policy measures to remove constraints to increasing poor farmers' access to national, regional and international agricultural markets determined, validated, and promoted

Implementation

- Workshops to prepare project implementation plan
- Establish innovation platforms to carry out activities for various outputs
- Action research to provide baseline information and track changes in Institutions and households
- Use PREA to evaluate and scale-out crop-livestock management technologies
- Use value chain approach to link farmers to market

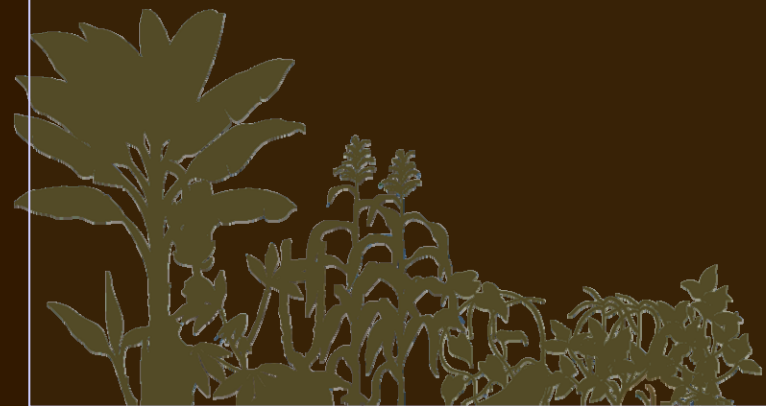


Learning Together Through Participatory Extension Approaches



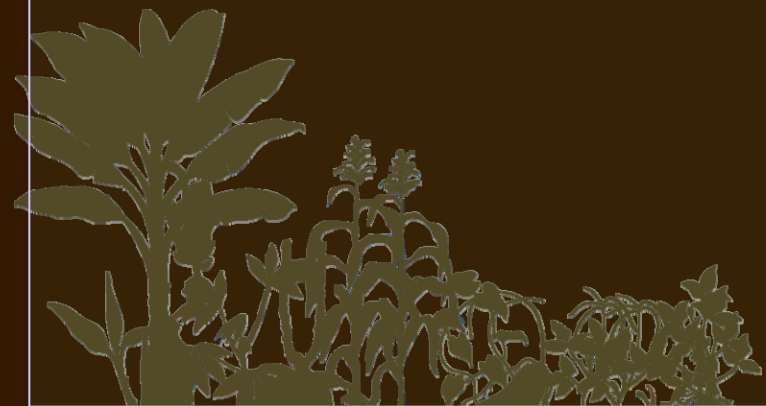
Partners

- **Farmers/Farmers Organisations**
- **IARC:IITA/ILRI**
- **NARES:IAR/NAPRI/NAERLS/KNARDA/
KTARDA**
- **NGOs:SG2000/WOFAN/IRNS**
- **ARI: NRI**



Partners

- **Private partners: Premier seeds/KAISADA/CZARD/Grand-cereals**
- **Public Services: Policy makers/National seed services**
- **SROs: FARA/CORAF**



IITA

Research to Nourish Africa



IITA
Research to Nourish Africa