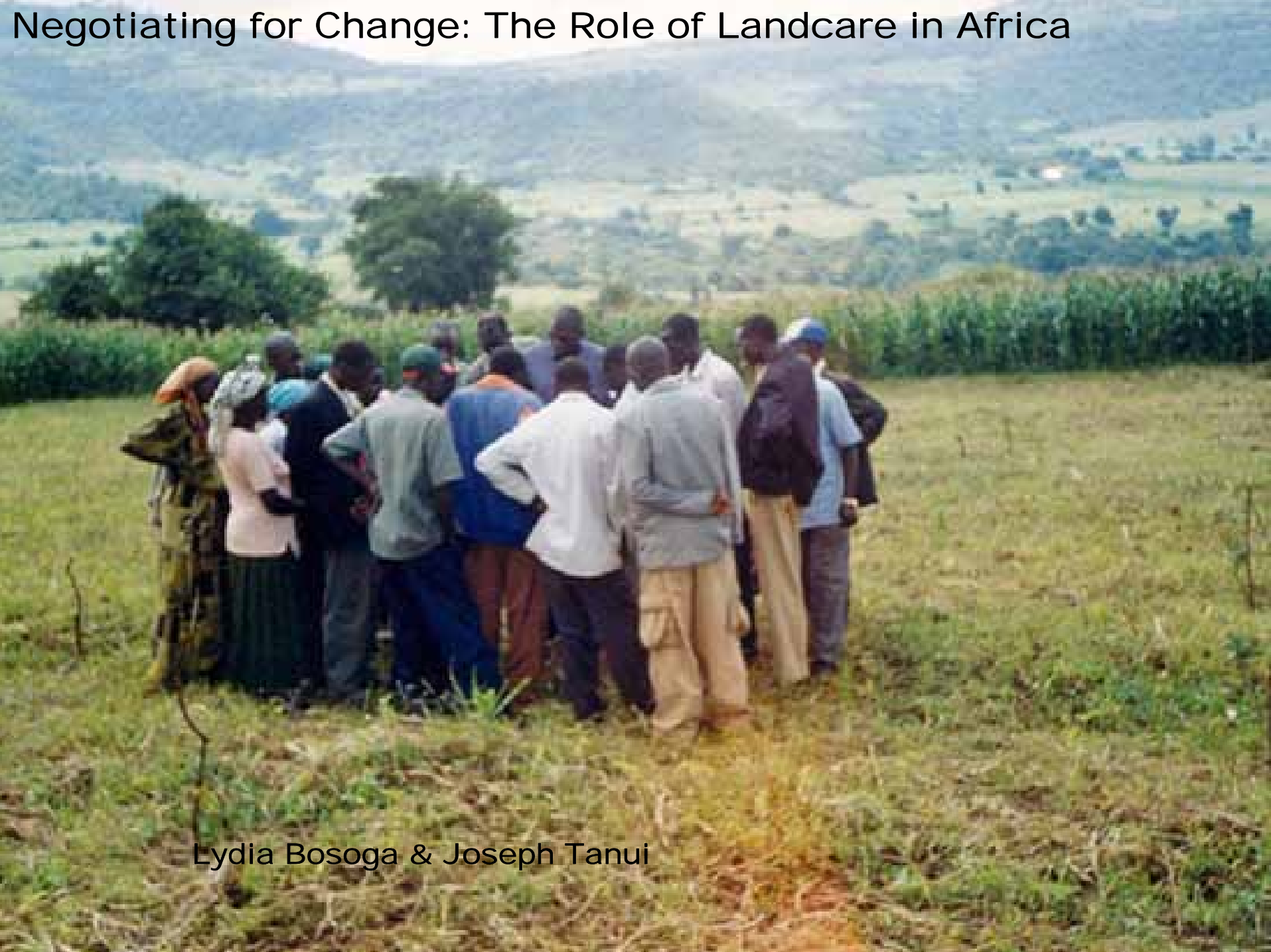


Negotiating for Change: The Role of Landcare in Africa



Lydia Bosoga & Joseph Tanui

Introduction

Trends in natural resource management and governance:



Current situation

-Traditional systems

Weak; legitimacy crisis internal to communities

-Modern legal system

Policies developed at national level; enforcement runs against social principles; Often undermine livelihoods; Shifts from communal to individual and public property

Introduction

Trends in natural resource management and governance:

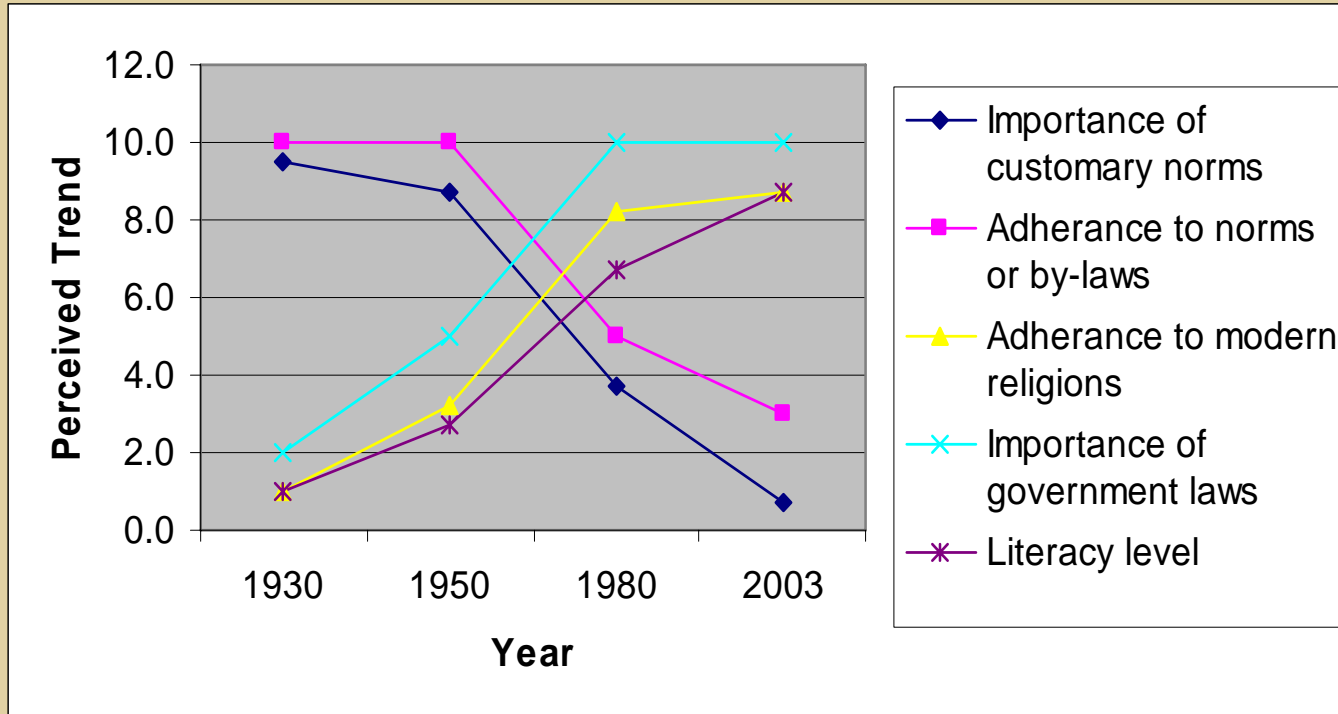


Figure 1.
Perceived trends in 'modernization' and governance, Lushoto, TZ

Historical trends analysis on landscape changes and NR degradation

Introduction

Trends in natural resource management and governance:



- *Colonial and post-colonial periods*: systematic delegitimization of traditional systems of governance; imposition of Western legal systems
- *Extension of modern health care*: declines in infant mortality & land pressure
- *Introduction to monetary economy*: liquidation of assets

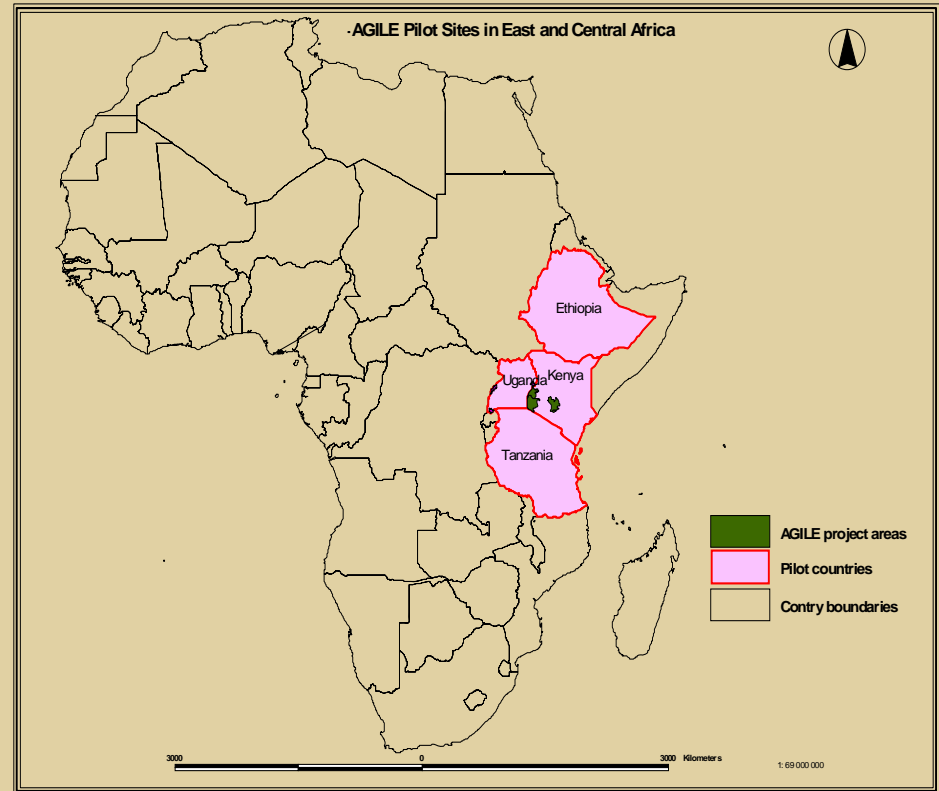
**Natural Resource
Degradation & Loss
of Future Use Value**

Landcare in East Africa: The AGILE CONCEPT

African Grassroots Innovation for Livelihoods and the Environment

AGILE is a concept for inculcating the tenets of Landcare in Eastern Africa:

- It is a people centered approach to natural resource management which strives to optimize conservation and livelihoods initiatives by enabling a community based and driven process.
- Agile's goal is to test an approach to collective action for integrated natural resource management in Eastern Africa
- Initial questions were:
 - Can Landcare provide inspiration to community land management efforts in Africa?
 - Can the introduction of Landcare be structured so that it builds on African initiatives and innovations



Severe nutrient depletion on farms







Uncontrolled communal grazing





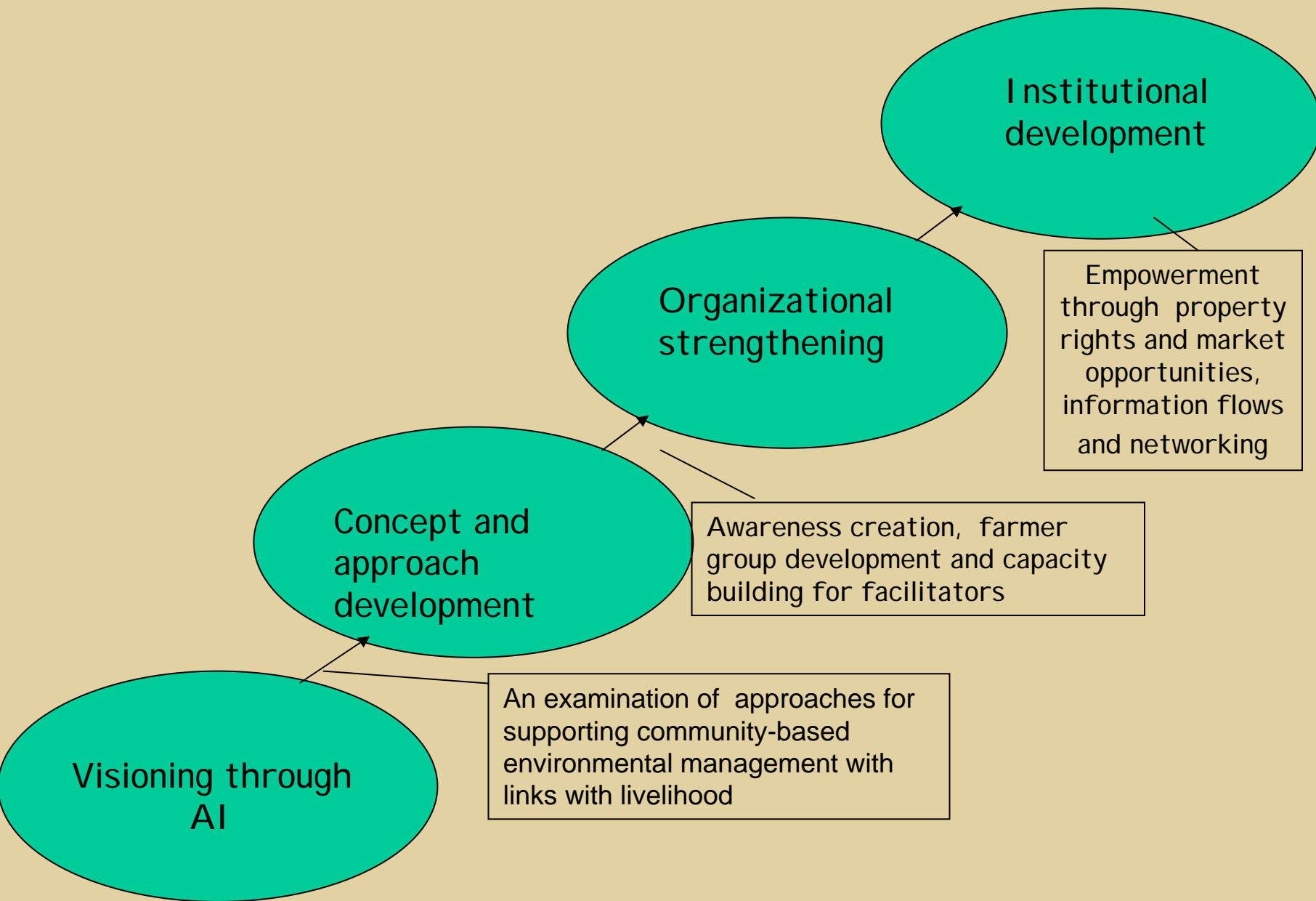
Research Context

Developing Innovation Systems by Facilitating Partnership & Institutional Arrangements

- Ensuring participation, ownership and demand-driven development
- Linking biophysical, governance and socio-economic factors in formulating solutions (need for multi-institutional strategies)
- Seeking sustainability through processes that link livelihoods and conservation (understanding & managing trade-offs)
- Enhancing the role of local government in legitimizing district level processes
- Need for historical perspective and strategy to build on past experiences



Farmer institutional development process



Linking into Farmer Learning cycles

Kapchorwa Landcare Chapter, Uganda

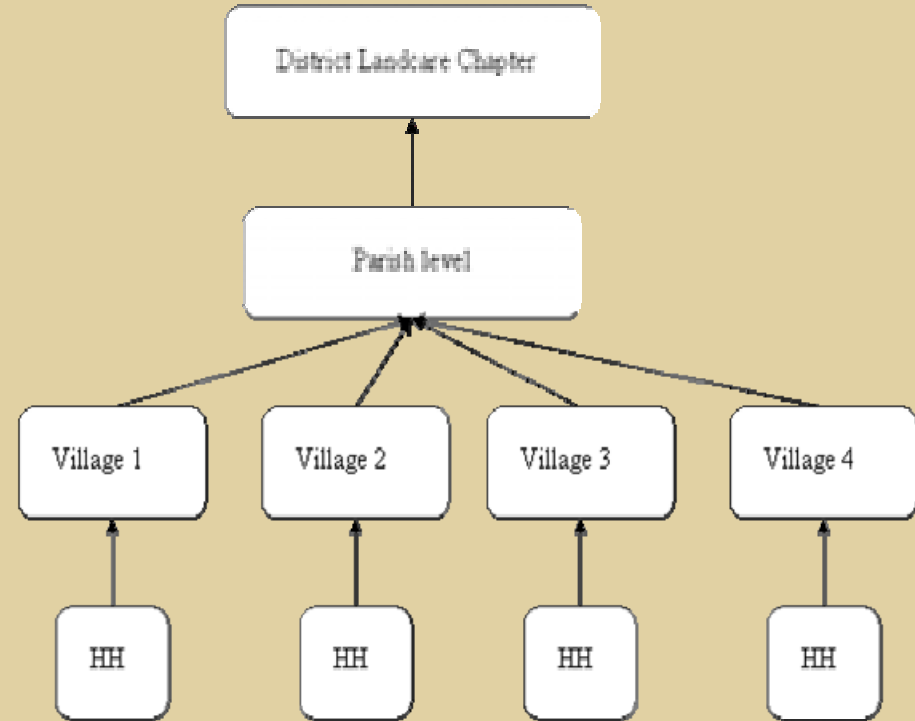
- ❑ Neighbourhoods meeting regularly to discuss and study a subject of mutual interest
- ❑ Characterized by democratic values and responsibilities towards common situations
- ❑ Based on collective wisdom, blend traditional knowledge with modern science through use of facilitators
- ❑ Unleashes potential to question authority of outside actors & demand for improved institutional linkages / support



Innovation platforms

Kapchorwa Landcare Chapter : District level innovation Platform

- ❑ Formation of a village representative committee drawn from Landcare members in 50 households per village, initially in 4 villages
- ❑ Committee representative, and village head elected to the parish level
- ❑ Parish level committee members constitute the community's representation to the district Landcare chapter, with inclusion from NGOs, CBOs.
- ❑ Members also include, Local government, Action Aid, Alliance of civil society organization, Sebeny Elders Association, Community based organizations (TUFA, CIFA, Tuikat Watershed)



Negotiating support

Issues:

- Boundary demarcation
- Access & use to park resources
- Local UWA-community conflict
- Illegal logging with blame placed on clearing for agriculture
- Physical & sexual abuse

Opportunities:

- Co-management law reinforcing community claims
- Opportunities for increased forest protection through greater local involvement (re-definition of “custodians”)
- Collective action a pre-condition for eliminating scapegoats used by guards
- Common interests by communities & national UWA



Figure 3: Community discussing protected area boundary

Conflict resolution

Case Overview

- ❑ Conflict between upper and lower watershed communities on resource use.
- ❑ Lower watershed communities mainly cattle keepers

- ❑ Existence of dual tenure arrangements
- ❑ Poor adoption levels of soil and water conservation technologies and practices
- ❑ High levels of land degradation and declines in productivity



Fig. 1 – The study area showing evidence of high degradation

Local byelaw reforms

Emerging Outcomes

- ❑ Development of bylaws and documentation of a participatory bylaw making process
- ❑ Local government involvement in legitimizing the process and supporting its implementation
- ❑ Adoption of soil and water conservation technologies and practices in the area
- ❑ Initiatives to scale out the documented process in neighbouring communities



Figure 2 : A sustainable environment

The African Landcare Network

- Provide opportunities for Landcare practitioners in Africa to strengthen their programs through interaction and learning from the experience in related countries.
- Initiate Landcare networks and organizations that will substantially expand and strengthen sustainable Landcare programs, and promote coordination and cooperation.
- Building on lessons learnt, develop action plans to leverage regional synergies including information sharing and capacity building



Rationale and purpose of ALN

Building a supportive African network that draws together Landcare initiatives to learn from each other.

Integrating Landcare into Africa-wide and sub-regional programs.

Facilitating access to and skills transfer through tertiary institutions and effective extension of research and development innovations.

Providing capacity building to country members and other stakeholders with Landcare philosophies.

Collecting and developing a database of Landcare success stories.

Mobilizing financial resources to facilitate strategic investments in Landcare.

Promoting partnership and *creating* buy-in among government structures for policy inclusion.



ALN ADDRESS'S THE FOLLOWING:

- ❑ Availability of information and transfer of Landcare processes and other natural resource management strategies
- ❑ Creating a forum/platform for partnership to build synergy
- ❑ Capacity development of various actors/champions in Landcare
- ❑ Establishing linkages of Landcare to policy or government structures, to African initiatives, and to other international institutions
- ❑ Mobilizing resources within the network and other partners to support Landcare initiatives



