

# DEVELOPMENT OF AFRICAN LANDCARE NETWORK TO PROMOTE SUSTAINABLE NATURAL RESOURCE MANAGEMENT

Directorate of Land Use & Soil Management, Department of Agriculture, Private Bag X120, Pretoria, 0001, South Africa

**L BOSOGA, T KHUMALO & M CHAUKE**



agriculture

Department:  
Agriculture  
REPUBLIC OF SOUTH AFRICA



# OUTLINE

---

- Background of African LandCare Network (ALN)
- What is African Landcare Network in a nutshell?
- Purpose of the ALN in relation to LandCare objects
- Approach for ALN?
- Achievements to date
- Challenges in land and natural resource issues in relation to research;
- Conclusion

## BACKGROUND OF ALN

- The LandCare approach was adopted by SA dating back in 1997, and has successfully demonstrated productive partnerships in natural resource management.
- A workshop to establish the African LandCare Network (ALN) was held in conjunction with the third South African biennial national LandCare Conference

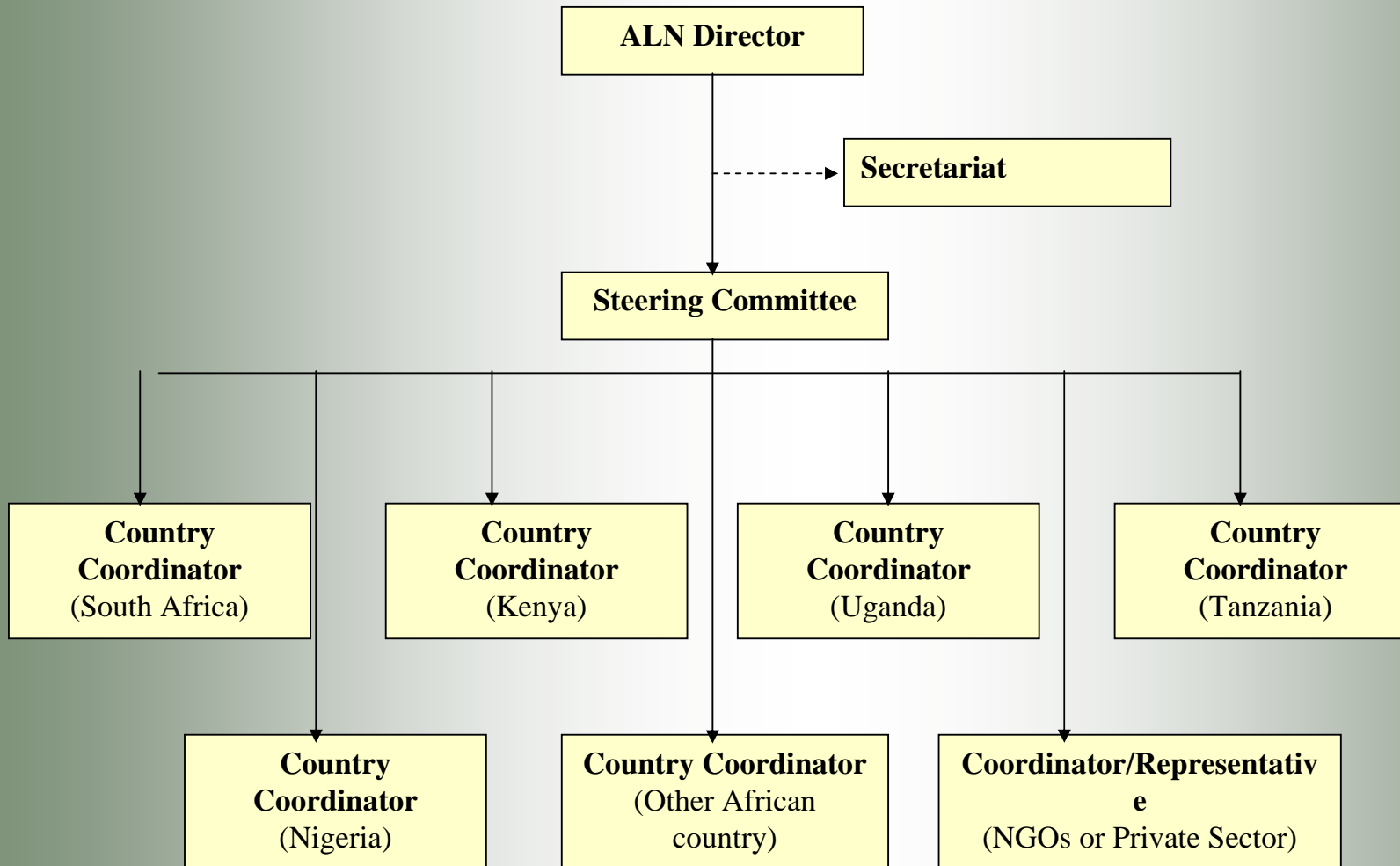


## BACKGROUND OF ALN continue

- The workshop, attended by participants from South Africa and East African countries namely, Tanzania, Kenya and Uganda, was convened as part of the agreed “Action Points” between East and South African participants to the first workshop held in January 2006 in Pretoria, organized by ICRAF and the South African LandCare Secretariat.
- The participants established an action plan to further the development of ALN, with a steering committee.



# ALN MANAGEMENT



## What is African Landcare Network intention in a nutshell?

- To build a network of country LandCare programmes as a general strategy to deliver the Millennium Development Goals (MDGs) in Africa by:
- promoting the LandCare approach, as a community-based approach to resolving many of the environmental problems and poverty issues that most African countries share.

## Purpose of the ALN in relation to LandCare objects

- *Integrate* LandCare into Africa-wide and sub-regional programmes.
- *Facilitating* access to and skills transfer through tertiary institutions and effective extension of research and development innovations.
- *Providing* capacity building to country members and other stakeholders with LandCare philosophies.
- *Collecting and developing* a database of LandCare success stories.
- *Mobilizing* financial resources to facilitate strategic investments in LandCare.
- *Promoting* partnership and *creating* buy-in among government structures for policy inclusion

## Achievements to date

---

- Draft governance document developed
- Draft communication strategy developed
- Participated on Facilitators training
- Development of ALN banner in process
- Plan to host the annual strategic planning meeting

## ALN Approach?

---

- The most important element in NRM is when people have knowledge on how to manage the resource
- It is significant because it involve mind set-up
- It is a form of securing future
- Essentially research that involves people will bring greater results and benefits

## CHALLENGES ENCOUNTERED SO FAR?

- Conventional approaches to agricultural research only emphasizing production over livelihoods
- Short-term economic gain over sustainability but have tended to embrace reductionism resulting in institutions specializing in either production or conservation.
- This structural constraint clearly reduces chances for innovation and market development that would in turn stimulate investments.
- The adoption of sustainable practices and advanced farming systems have found that the adoption of these technologies has rarely met the point of rapid diffusion because of imperfect information, capital, and/or income constraints, market failures and other reasons

## Conclusion

- There is a need for approaches that can generate and communicate alternative visions of land use
- It has become apparent that through LandCare Approach, communities could manage their resource
- As team we need to ensure that research developed is linked to LandCare approach for such research to touch and improve many live of our communities

***“Fostering community level Institutions and leadership for sustainable Land management in Africa”***

# THANK YOU



[www.agis.agric.za/agisweb/landcare](http://www.agis.agric.za/agisweb/landcare)